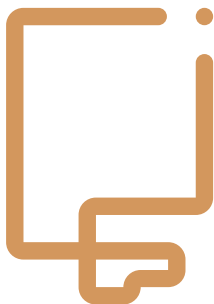


ZETLIGHT



Horizon Aqua

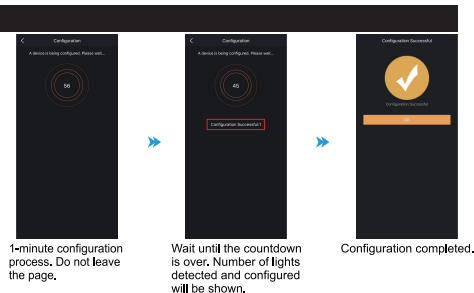
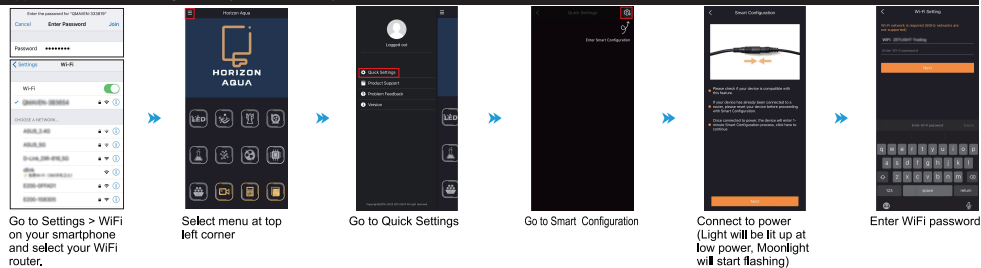
APP Instruction for
HORIZON AQUA READY
LED Lighting



www.zetlight.com
info@zetlight.com

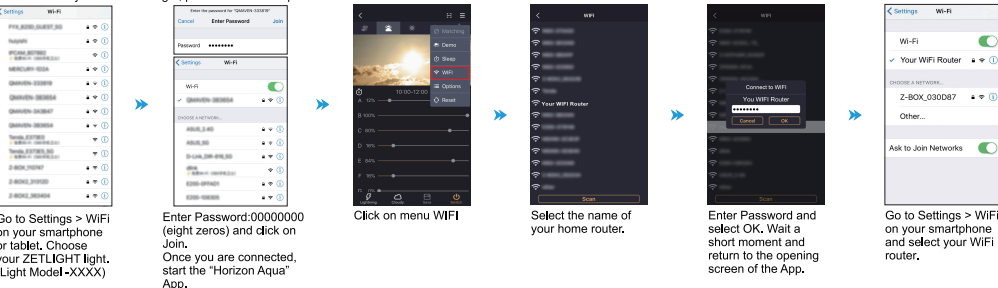
Two ways to connect your light to a router (Not compatible with 5GHz network)

Approach #1 Smart Configuration (Recommended)



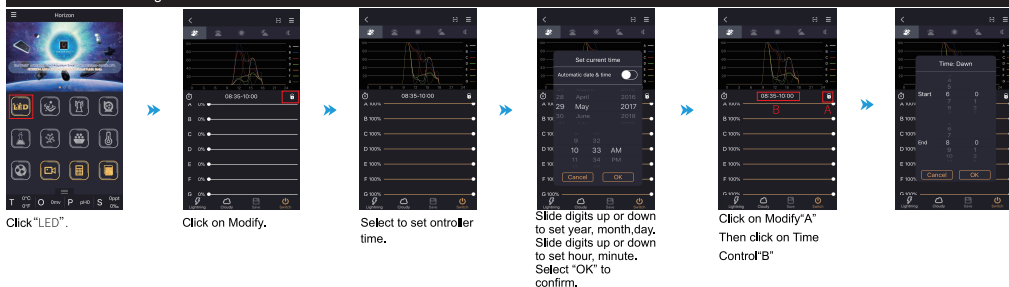
Approach #2 Connect to Light's Wi-Fi

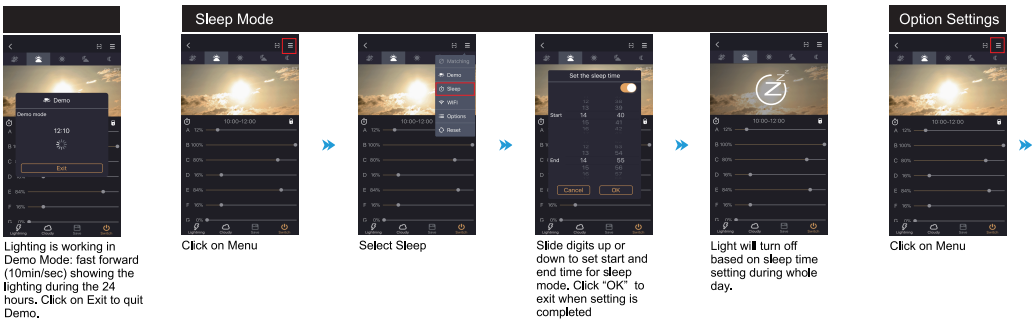
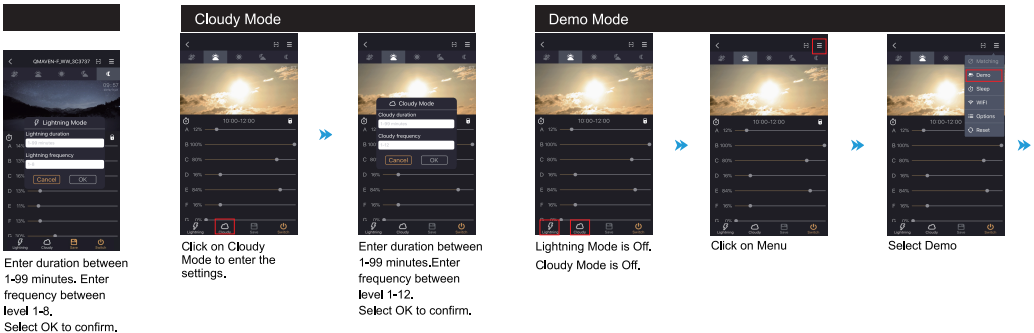
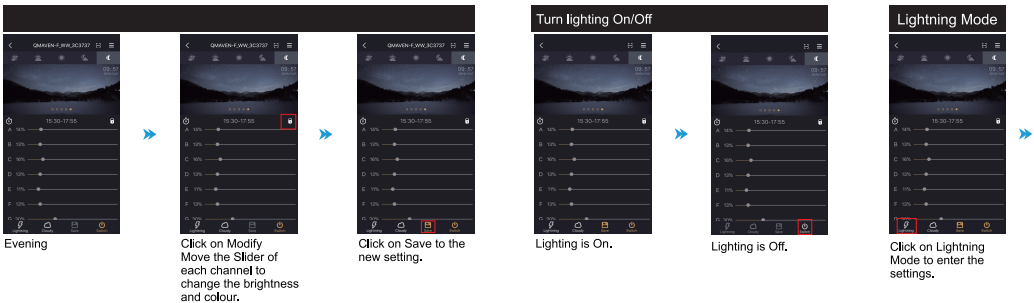
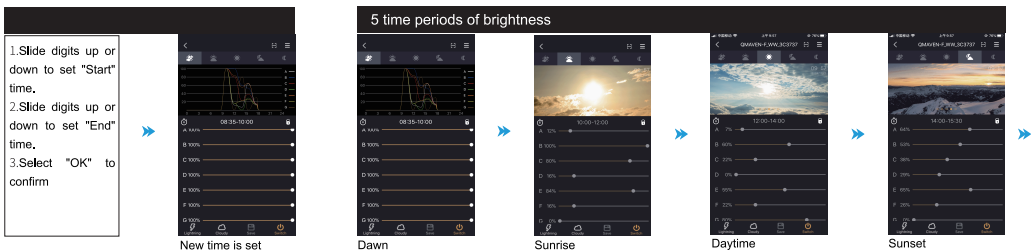
You can control the light now but if you wish to have internet while you control the light, proceed to next step.

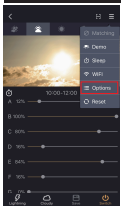


How to control your light

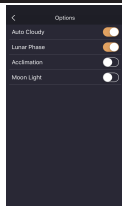
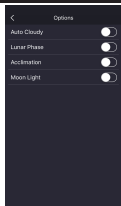
Date and Time setting



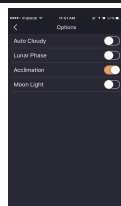




Select Option



Auto Cloudy randomly runs cloudy light conditions from Dawn to Sunset. Lunar Phase random position of the moon in the evening period, (Moon Light option is not applicable).



Accimation offers a 10-day period for new inhabitants to get acclimated to the environment. Auto Cloudy and Lunar Phase are disabled during Accimation.

Light settings sharing through QR code



Click on QR

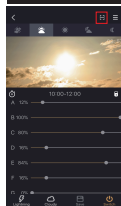


Generate a QR code of your setting include each time duration, brightness and colour.



Save your QR code. Now you can recode your setting by QR code and share with your friends.

Load the settings through QR code scan



Click on QR

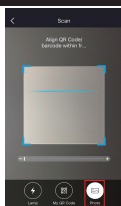


QR code light setting preview interface. Slide left or right to check light effects for different time periods.

Read QR code setting



Click on QR



Click photo button to go to the album on your smartphone.

Access phone album



Select QR code

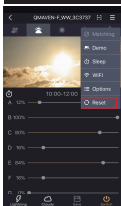


Select Choose

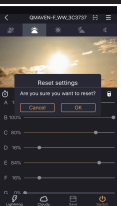


QR code light setting preview interface. Slide left or right to check light effects for different time periods.

Restore to default settings



Click Reset



Select Reset to restore to default settings. Click "OK" if you want to return to default settings. You will have to connect in AP Mode again!