

 Aquaforest®
OCEANGUARD
REEFING BRILLIANCE



REEFING BRILLIANCE

At the heart of every idea, product, and decision we make at Aquaforest, it is informed by our passion for the hobby and the dedication to our loyal customers who believe in us.

Since the very beginning, we dreamed of designing a line of high-quality aquariums for reefers who demand the best in the hobby. Twenty seven years later, our dream has finally come true.

We are so proud to share with you the new Aquaforest OceanGuard aquarium. We've spent years testing and evolving these aquariums with the latest methods, technologies, and materials available until we felt we had something that met our standards for superior quality, craftsmanship, and design. After rigorous testing and collaboration between our world-class engineers and experienced aquarists, we're proud to share our most advanced reefing solution with you.

Delivering you the unforgettable experience is what makes us going. We always stay up to date with the needs of modern aquarists, so we decided on technologies that can fit all your needs. Our idea was to create aquarium sets where the applied science and experience meet.

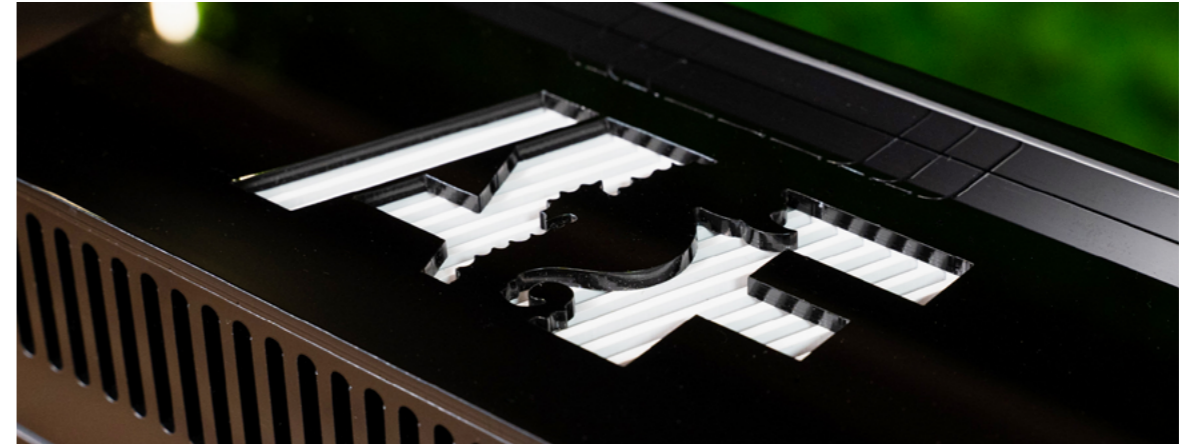
Laser finish of overflow and sump elements ensures ideal form with no sharp edges or ragged surface. We made sure to deliver you a perfectly tight aquarium system. Not only we applied the newest PVC welding methods, but we also tested each sump before it left our production hall.

We combined reliability and care for smallest details to give you an ultimate premium feeling.





WHAT MAKES US STAND OUT? OUR COMMITMENT TO QUALITY



Known for the highest standards in the market, we challenged ourselves to design the AF OceanGuard aquarium against our first brand principle - quality at all cost and no compromise.

Each element was carefully designed and fabricated to meet our rigorous standards and be able to stand the test of time in the most unfavorable, humid, and difficult reefing conditions.

To ensure the OceanGuard lives up to our superior craftsmanship and quality standards, we've implemented the following features and benefits:

- **OPTIWHITE™ CRYSTAL CLEAR GLASS WITH INCREASED SCRATCH-RESISTANCE**
- **MARINE YACHTS HARDWOOD PLYWOOD TO WITHSTAND ENORMOUS AMOUNTS OF SALTWATER, TEMPERATURE CHANGES AND HUMIDITY**
- **JAPANESE STAINLESS-STEEL HINGES**
- **ULTRA-STRONG CABINET CONSTRUCTION. UP TO 10 TIMES MORE DURABLE THAN OTHERS IN THE MARKET**
- **PLUMBING DESIGNED FOR SILENCE AND OPTIMAL FLOW**

MARINE YACHT TECHNOLOGY



The specific requirements of marine aquariums made us decide on technologies known from the sailing constructions. The AF OceanGuard aquariums sets reach our customers with a completely assembled supporting structure of high-pressured hardwood plywood.

Marine yacht technology means using only waterproof materials, that are resistant to all kinds of difficult conditions. The construction has no weak points, besides the multi-layered pressured yacht plywood, we took care of the smallest details.

- **MARINE-GRADE, PRESSURE-TREATED, MULTILAYERED HARDWOOD PLYWOOD**
- **CORROSION-RESISTANT TO SALT SPRAY AND CHEMICAL RESIDUE**
- **PREMIUM JAPANESE STAINLESS-STEEL HINGES AND A2 STAINLESS-STEEL SCREWS**
- **ASSEMBLED BY AQUAFORST FOR MAXIMUM CONVENIENCE AND SAFETY**



CARBON BLACK

DARK GRAY

RHINO

CRUSHED ICE

WARM SAND

WHITE

REDESIGN WITHOUT HASSLE

The minimalist design fits perfectly any interior. With interchangeable and removable waterproof external panels, you can customize the color of the cabinet to match your style without disassembling or moving the aquarium.

Inside the sump, we combined sleek aesthetics with practicality and convenience. By engineering the stand to withstand up to 10 times the weight of other stands on the market, we're able to increase the accessibility into the sump for routine service. In addition, starting with the 605 we added a shelf (e.g. for a dosing pump) and a place for a chiller to keep the area inside the stand clean and safe from splashes.

- **INTERCHANGEABLE EXTERIOR PANELS TO MATCH YOUR STYLE AND PREFERENCES**
- **WATERPROOF INTERIOR AND EXTERIOR FOR MAXIMUM STRENGTH AND STABILITY**
- **ADJUSTABLE DRY-SIDE SHELF FOR CONVENIENCE AND VERSATILITY FOR DOSING PUMPS, CONTAINERS, AND CHILLER**
- **SPACIOUS STAND CONFIGURATION FOR EASE OF ACCESS INTO THE SUMP**

SAFE & SILENT



The solid PVC sump rests on a vibration-reducing foam mat to help minimize sound and vibrations giving you a sump that sounds like it is floating on air. We chose to use solid PVC over glass because PVC is more durable, water-tight and looks better than glass.

- **SILENCER DISKS ON THE DRAINS**
- **WATER LEVEL MARKS FOR EASY EQUIPMENT ADJUSTMENT**
- **CASCADING CHAMBERS FOR FILTRATION SOCKS OR SPACE FOR ANY AQUAFORST MEDIA REACTOR OR ROLLERMAT**





NEW SOLUTIONS FOR PLUMBING



Being reefers all our lives we know a thing or two about marine aquariums and the need for redundancies and safeguards when it comes to plumbing. That's why we carefully constructed the plumbing system to maximize safety at the ideal flow rates for your convenience and peace of mind.

- **QUICK INSTALLATION OF PLUMBING, NO GLUING REQUIRED**
- **SUPERIOR EUROPEAN MADE GATE VALVE FOR PRECISE ADJUSTMENT AND EMERGENCY DRAIN PIPE**
- **EUROPEAN MADE CHECK VALVE TO PREVENT DRAINING YOUR TANK INTO THE SUMP**
- **NEAR SILENT DOWNFLOW DUE TO THE THICKNESS AND QUALITY OF THE PIPE**

SEE IT CLEARLY



Having the highest-quality, clearest glass possible can make a tank really pop. We've gone to great lengths to source, test, and offer some of the best glass on the market.

All AF OceanGuard tanks are made with ultra-premium Pilkington Optiwhite™ glass and a specifically designed black silicone exclusively for Aquaforest. Pilkington Optiwhite™, is an ultra low-iron, crystal clear glass with no green tint or uneven surfaces regardless of glass thickness. This results in optically clear glass with no visible signs of distortion making it an ideal glass to view your fish and corals.

In addition, all OceanGuard tanks use Pilkington black glass on the overflow box, bottom, and rear panes of glass for maximum durability, scratch resistance, and a pleasing visual aesthetic. The high gloss rear panel also provides excellent color contrast to help make pictures look better.

Due to the strength and thickness of the glass we have been able to create an ultra-premium rimless aquariums while maintaining excellent light transmittance and safety.

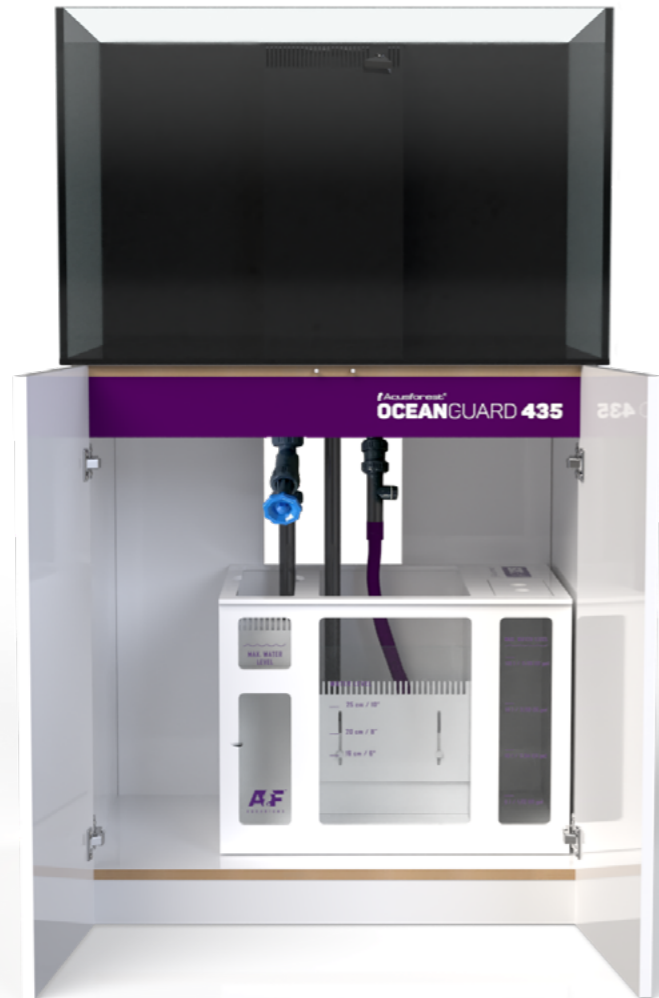
- **PILKINGTON OPTIWHITE™ ULTRA LOW-IRON, CRYSTAL CLEAR GLASS**
- **DISTORTION-FREE VIEWING**
- **EASY TO CLEAN AND SCRATCH-RESISTANT**
- **DURABLE, RIMLESS TANK WITH PROPRIETARY BLACK SILICONE**
- **BLACK GLASS OVERFLOW, BOTTOM, AND REAR PANE**
- **HIGH-DENSITY, ANTI-VIBRATION LEVELING FOAM MATT**





Aquaforest®
OCEANGUARD 275

DIMENSIONS OF AQUARIUM				DIMENSIONS OF CABINET		
LENGTH	WIDTH	HEIGHT	GLASS	LENGTH	WIDTH	HEIGHT
60 CM	55 CM	55 CM	10 MM	60 CM	55 CM	94 CM
23,6 IN	21,7 IN	21,7 IN	3/8 IN	23,6 IN	21,7 IN	37 IN
DIMENSIONS OF SUMP			AQUARIUM VOLUME	SYSTEM VOLUME		
LENGTH	WIDTH	HEIGHT				
50 CM	41,5 CM	45 CM	180 L	275 L		
19,7 IN	16,3 IN	17,7 IN	48 US GAL	73 US GAL		
RECOMMENDED WATER FLOW		RECOMMENDED SKIMMER		RECOMMENDED MEDIA REACTOR		
2000-2500 L/H		AF150 IN		AF90 MEDIA REACTOR		



Aquaforest®
OCEANGUARD 435

DIMENSIONS OF AQUARIUM				DIMENSIONS OF CABINET		
LENGTH	WIDTH	HEIGHT	GLASS	LENGTH	WIDTH	HEIGHT
90 CM	60 CM	57,5 CM	12 MM	90 CM	60 CM	94 CM
35,4 IN	23,6 IN	22,6 IN	1/2 IN	35,4 IN	23,6 IN	37 IN
DIMENSIONS OF SUMP			AQUARIUM VOLUME	SYSTEM VOLUME		
LENGTH	WIDTH	HEIGHT				
60 CM	46,5 CM	45 CM	310 L	435 L		
23,6 IN	18,3 IN	17,7 IN	82 US GAL	115 US GAL		
RECOMMENDED WATER FLOW		RECOMMENDED SKIMMER		RECOMMENDED MEDIA REACTOR		
2500-3000 L/H		AF150 IN		AF90 MEDIA REACTOR		



Aquaforest®
OCEANGUARD 605

DIMENSIONS OF AQUARIUM				DIMENSIONS OF CABINET		
LENGTH	WIDTH	HEIGHT	GLASS	LENGTH	WIDTH	HEIGHT
120 CM	62,5 CM	57,5 CM	12 MM	120 CM	60 CM	94 CM
47,2 IN	24,6 IN	22,6 IN	1/2 IN	47,2 IN	23,6 IN	37 IN
DIMENSIONS OF SUMP			AQUARIUM VOLUME	SYSTEM VOLUME		
LENGTH	WIDTH	HEIGHT				
80 CM	48,5 CM	60 CM	430 L	605 L		
31,5 IN	19,1 IN	17,7 IN	114 US GAL	160 US GAL		
RECOMMENDED WATER FLOW		RECOMMENDED SKIMMER		RECOMMENDED MEDIA REACTOR		
3000-4000 L/H		AF150 IN/AF200 IN		AF90 MEDIA REACTOR		



Aquaforest®
OCEANGUARD 790

DIMENSIONS OF AQUARIUM				DIMENSIONS OF CABINET		
LENGTH	WIDTH	HEIGHT	GLASS	LENGTH	WIDTH	HEIGHT
150 CM	65 CM	60 CM	15 MM	150 CM	65 CM	94 CM
59,1 IN	25,6 IN	23,6 IN	5/8 IN	59,1 IN	25,6 IN	37 IN
DIMENSIONS OF SUMP			AQUARIUM VOLUME	SYSTEM VOLUME		
LENGTH	WIDTH	HEIGHT				
90 CM	50,5 CM	45 CM	585 L	790 L		
35,4 IN	19,9 IN	17,7 IN	155 US GAL	209 US GAL		
RECOMMENDED WATER FLOW		RECOMMENDED SKIMMER		RECOMMENDED MEDIA REACTOR		
5000-6000 L/H		AF200 /AF200 IN		AF110 MEDIA REACTOR		



Aquaforest®
OCEANGUARD 980

DIMENSIONS OF AQUARIUM				DIMENSIONS OF CABINET		
LENGTH	WIDTH	HEIGHT	GLASS	LENGTH	WIDTH	HEIGHT
180 CM	67,5 CM	60 CM	19 MM	180 CM	67,5 CM	94 CM
70,9 IN	26,6 IN	23,6 IN	3/4 IN	70,9 IN	26,6 IN	37 IN
DIMENSIONS OF SUMP			AQUARIUM VOLUME	SYSTEM VOLUME		
LENGTH	WIDTH	HEIGHT				
110 CM	51,5 CM	45 CM	730 L	980 L		
43,3 IN	20,3 IN	17,7 IN	193 US GAL	259 US GAL		
RECOMMENDED WATER FLOW		RECOMMENDED SKIMMER		RECOMMENDED MEDIA REACTOR		
6000-7000 L/H		AF250 /AF250 IN		AF110 MEDIA REACTOR		

AF275



275 L
73 US GAL

60 cm
23,6 in

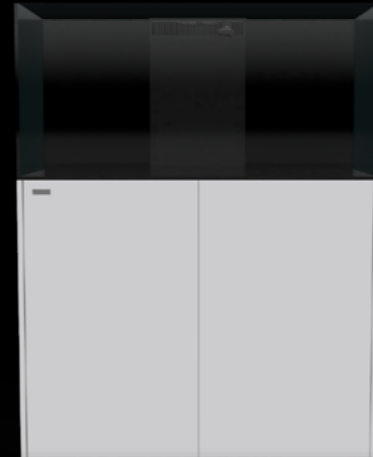
AF435



435 L
115 US GAL

90 cm
35,4 in

AF605



605 L
160 US GAL

120 cm
47,2 in

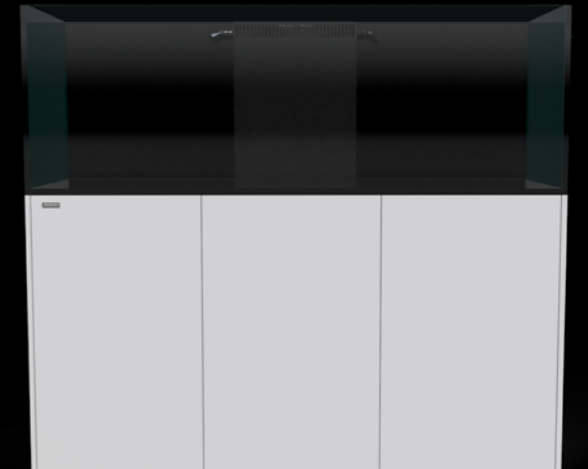
AF790



790 L
209 US GAL

150 cm
59,1 in

AF980



980 L
259 US GAL

180 cm
70,9 in

AF275



275 L
 73 US GAL

60 cm
 23,6 in

AF435



435 L
 115 US GAL

90 cm
 35,4 in

AF605



605 L
 160 US GAL

120 cm
 47,2 in

AF790



790 L
 209 US GAL

150 cm
 59,1 in

AF980



980 L
 259 US GAL

180 cm
 70,9 in

FULL COMPARISON

	DIMENSIONS OF AQUARIUM				DIMENSIONS OF SUMP			VOLUME OF WATER IN THE AQUARIUM	VOLUME OF WATER IN THE WHOLE SYSTEM
	LENGTH	WIDTH	HEIGHT	GLASS	LENGTH	WIDTH	HEIGHT		
AF275	60 CM 23,6 IN	55 CM 21,7 IN	55 CM 21,7 IN	10 CM ¾ IN	50 CM 19,7 IN	41,5 CM 16,3 IN	45,5 CM 17,9 IN	180 L 48 US GAL.	275 L 73 US GAL.
AF435	90 CM 35,4 IN	60 CM 23,6 IN	57,5 CM 22,6 IN	12 CM ½ IN	60 CM 23,6 IN	46 CM 18,3 IN	45,5 CM 17,9 IN	310 L 82 US GAL.	435 L 115 US GAL.
AF605	120 CM 47,2 IN	62,5 CM 24,6 IN	57,5 CM 22,6 IN	12 CM ½ IN	80 CM 31,5 IN	48,5 CM 19,1 IN	45,5 CM 17,9 IN	430 L 114 US GAL.	605 L 160 US GAL.
AF790	150 CM 59,1 IN	65 CM 25,6 IN	60 CM 23,6 IN	15 CM ¾ IN	90 CM 35,4 IN	50,5 CM 19,9 IN	45,5 CM 17,9 IN	585 L 155 US GAL.	790 L 209 US GAL.
AF980	180 CM 70,9 IN	67,5 CM 26,6 IN	60 CM 23,6 IN	19 CM ¾ IN	110 CM 43,3 IN	51,5 CM 20,3 IN	45,5 CM 17,9 IN	730 L 193 US GAL.	980 L 259 US GAL.



 Aquaforest®

Aquaforest is trademark of
Aquaforest sp. z o.o.
ul. Starowiejska 18
32-800 Brzesko, Poland
(+48) 14 691 79 79
info@aquaforest.eu
www.aquaforest.eu

